

## 智能通讯棒

(4G Kit-CN-G20 | 4G Kit-CN-G21 | 4G Kit-G20)

### 快速安装指导

版权所有©固德威技术股份有限公司 2025。保留所有权利。

- 因产品版本升级或其他原因, 本文档内容会不定期进行更新。如无特殊约定, 本文档不可取代产品标签或用户手册。本文档中的所有描述仅作为使用指导。
- 设备所有操作必须由专业、合格的电气技术人员进行, 技术人员需熟知项目所在地相关标准及安全规范。
- 未按照本文档或对应用户手册要求安装、使用、配置逆变器造成的设备损坏或人员伤亡, 不在设备厂商责任范围之内。



固德威官网

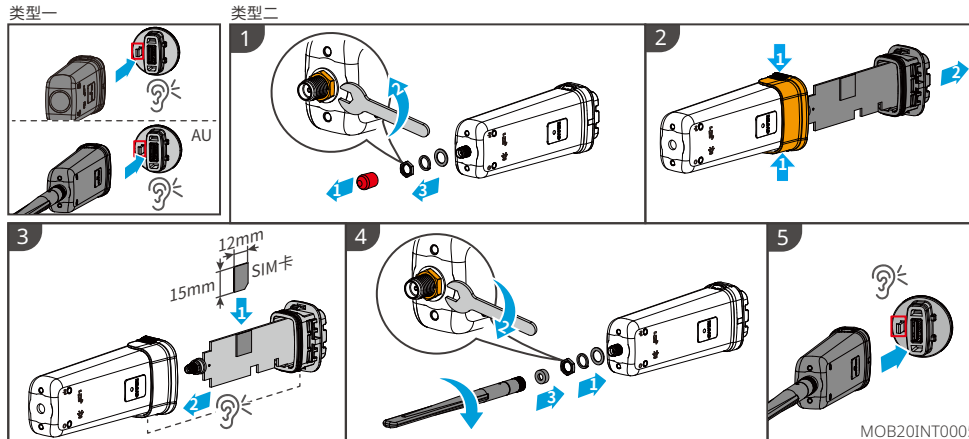
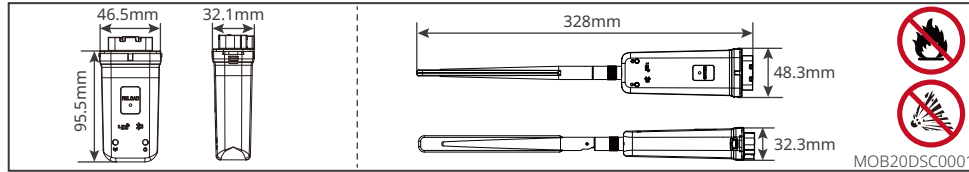
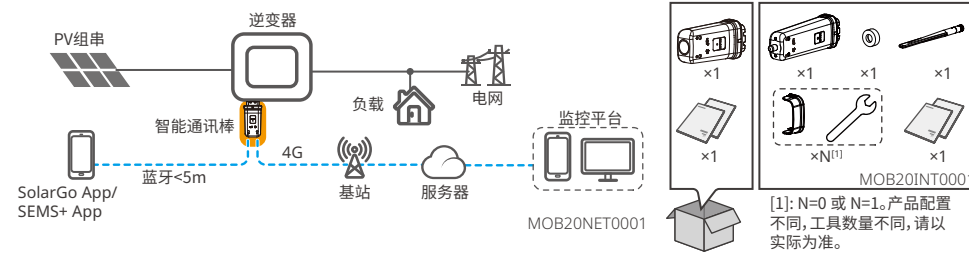


340-01306-01

固德威技术股份有限公司

中国 苏州 高新区紫金路90号  
T: 400-998-1212  
www.goodwe.com  
service@goodwe.com

### 1 安装



### 安装接线流程

#### 2 调测

产品型号	4G Kit-CN-G20	4G Kit-CN-G21	4G Kit-G20
设备管理			
最大支持逆变器数量	1	1	1
电源参数			
输入电压(V)	5	5	5
功耗(W)	≤4	≤4	≤5
接口方式	USB	USB	USB
通信参数			
4G/3G/2G	LTE-FDD: B1/B3/B5/B8 LTE-TDD: B34/B39/B40/B41	LTE-FDD: B1/2/3/4/5/7/8/12/13/18/ 19/20/25/26/28/66 LTE-TDD: B34/38/39/40/41 WCDMA: B1/2/4/5/6/8/19 GSM/EDGE: B2/3/5/8	
GNSS定位	/	北斗、GPS	/
蓝牙	蓝牙V5.0	蓝牙V5.0	蓝牙V5.0
4G扩展天线	/		4G
机械参数			
尺寸(宽x高x厚mm)	48.3*95.5*32.1		48.3*328*32.3 (含外置天线)
重量(g)	87		100 (含外置天线)
指示灯	LED*2		LED*2
安装方式	即插即用		即插即用
SIM卡尺寸	Micro SIM, 15mm*12mm		Micro SIM, 15mm*12mm
环境参数			
工作温度范围(°C)	-30~+65		-30~+65
储存温度范围(°C)	-40~+70		-40~+70
相对湿度	0-100%		0-100%
IP等级	IP66		IP66
最高工作海拔(m)	4000		4000

MOB20DSC0001

指示灯	状态	说明
电源	常亮	智能通讯棒已上电。
	熄灭	智能通讯棒未上电。
4G	常亮	智能通讯棒已连接至服务器, 通讯正常。
	单闪	通讯棒处于蓝牙广播模式。 <sup>[1]</sup>
	两次闪烁	智能通讯棒未连接至基站。
	四次闪烁	智能通讯棒已连接至基站, 未连接至服务器。
	六次闪烁	智能通讯棒与逆变器的通讯断开。
	熄灭	智能通讯棒软件复位中或未上电。
按钮	说明	
RELOAD	双击, 通讯棒开启蓝牙广播。 <sup>[1]</sup>	
	按住0.5~3秒, 智能通讯棒将重启。	
	按住6~20秒, 智能通讯棒将恢复出厂设置。	

[1]: 仅适用于4G Kit-G20。

MOB20DSC0002



4G G2 快速  
安装指导



SolarGo APP  
用户手册

## Smart Dongle

(4G Kit-CN-G20 | 4G Kit-CN-G21 | 4G Kit-G20)

### Quick Installation Guide

Copyright © GoodWe Technologies Co., Ltd. 2025. All rights reserved.

- The information in this quick installation guide is subject to change due to product updates or other reasons. This guide cannot replace the product labels or the safety precautions in the user manual unless otherwise specified. All descriptions here are for guidance only.
- All operations should be performed by trained and knowledgeable technicians who are familiar with local standards and safety regulations.
- Strictly follow the installation, operation, and configuration instructions in this guide and user manual. The manufacturer shall not be liable for equipment damage or personal injury if you do not follow the instructions.



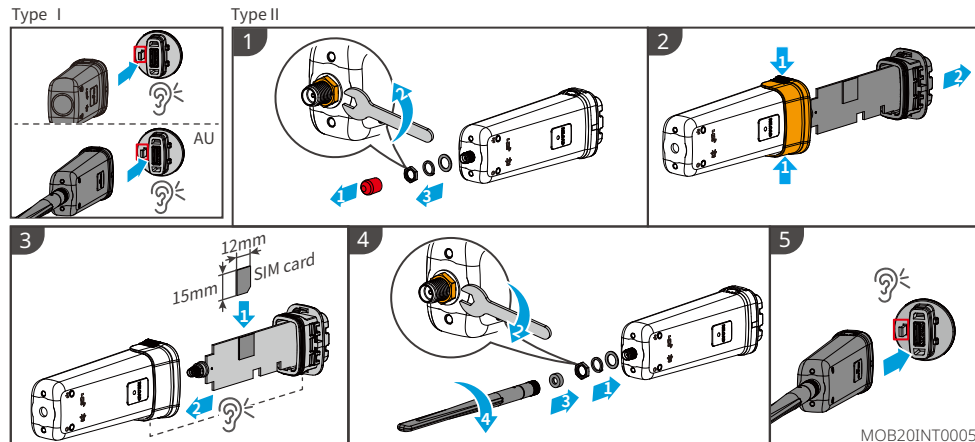
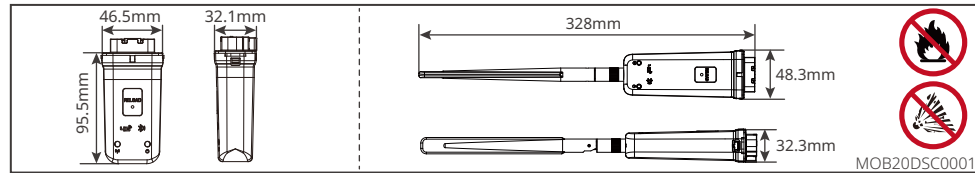
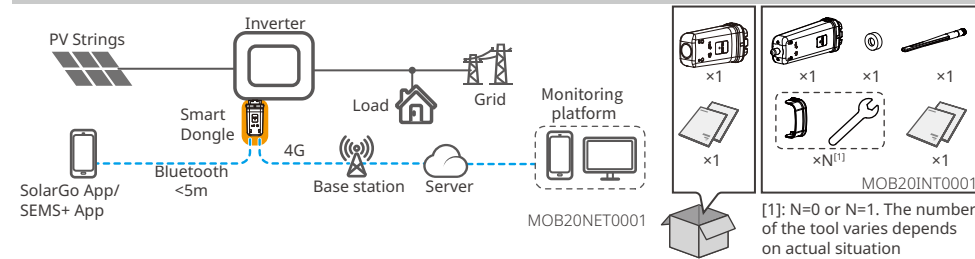
Official Website



340-01306-01

**GoodWe Technologies Co., Ltd.**  
 No. 90 Zijin Rd., New District,  
 Suzhou, 215011, China  
[www.goodwe.com](http://www.goodwe.com)  
[service@goodwe.com](mailto:service@goodwe.com)

#### 1 Installation



## Procedure

### 2 Commissioning and Monitoring

Model	4G Kit-CN-G20	4G Kit-CN-G21	4G Kit-G20
<b>Device Management</b>			
Max. Number of Connected Devices	1	1	1
<b>Power</b>			
Input Voltage (V)	5	5	5
Power Consumption (W)	≤4	≤4	≤5
Connection Interface	USB	USB	USB
<b>Communication</b>			
4G/3G/2G	LTE-FDD: B1/B3/B5/B8 LTE-TDD: B34/B39/B40/B41	LTE-FDD: B1/2/3/4/5/7/8/12/13/18/ 19/20/25/26/28/66 LTE-TDD: B34/38/39/40/41 WCDMA: B1/2/4/5/6/8/19 GSM/EDGE: B2/3/5/8	
GNSS	/	BDS/GPS	/
Bluetooth	Bluetooth V5.0	Bluetooth V5.0	Bluetooth V5.0
Extension Antenna	/	/	4G
<b>Mechanical</b>			
Dimensions (W×H×D mm)	48.3*95.5*32.1	48.3*328*32.3 (With external antenna)	
Weight (g)	87	100 (With external antenna)	
Indicator	LED*2	LED*2	
Installation	Plug and Play	Plug and Play	
Sim card type	Micro SIM, 15mm*12mm	Micro SIM, 15mm*12mm	
<b>Environment</b>			
Operating Temperature Range (°C)	-30~+65	-30~+65	
Storage Temperature Range (°C)	-40~+70	-40~+70	
Relative Humidity	0-100%	0-100%	
Ingress Protection Rating	IP66	IP66	
Max. Operating Altitude (m)	4000	4000	

MOB20DSC0001

Indicator	Status	Description
Power	Steady on	The Smart Dongle is powered on.
	Off	The Smart Dongle is not powered on.
Signal	Steady on	The Smart Dongle is connected to the server and communicating normally.
	Single blink	The bluetooth signal of the Smart Dongle is on. <sup>[1]</sup>
	Two blinks	The Smart Dongle is not connected to the router.
	Four blinks	The Smart Dongle is connected to the router but not connected to the server.
	Six blinks	Communication between the Smart Dongle and the inverter is interrupted.
	Off	The software of the Smart Dongle is in reset or not powered on.
RELOAD	Double click to turn on the bluetooth signal. <sup>[1]</sup>	
	Press and hold for 0.5 to 3 seconds	to restart the Smart Dongle.
	Press and hold for 6 to 20 seconds	to restore the Smart Dongle to factory settings.

[1]: Only for 4G Kit-G20.

MOB20DSC0002